

V5 Indoor Units



Ducted Type, Cassettes, Wall Hung, Floor Ceiling and Console Type Units

Mammoth indoor units provide high efficiency and tremendous energy savings. These commercial grade inverter fan coils incorporate the most advanced heating and cooling technology available in the industry today. Inverter technology provides soft starting with super quiet operation and superior comfort over traditional air conditioning systems. These indoor units can be mixed and matched in thousands of combination to meet all load, air distribution, comfort, and décor demands.

V5 Indoor Units - 7K to 96K BTU

Capacity Range (Approximately Btuh)	7,000	9,000	12,000	14,000
Ducted Low ESP	BDDL-2.2(07)SAK	BDDL-2.8(09)SAK	BDDL-3.6(12)SAK	–
Wall Mounted	B-HW-2.2(07)-A3AK	B-HW-2.8(09)-A3AK	B-HW-3.6(12)-A3AK	BDDL-4.1(14)SAK
Floor Ceiling	–	BDFC-2.8(09)-AK	BDFC-3.6(12)-AK	–
4-Way Cassette	BD4W-2.2(07)SAK	BD4W-2.8(09)SAK	BD4W-3.6(12)SAK	–
Compact 4-Way Cassette	–	BD4W-2.8(09)SBV	BD4W-3.6(12)SBV	–
2-Way Cassette	–	BD2W-2.8(09)SAK	BD2W-3.6(12)SAK	–
Console	BDCO-2.2(07)-AK	BDCO-2.8(09)-AK	BDCO-3.6(12)-AK	–

Capacity Range (Approximately Btuh)	15,000	18,000	21,000	24,000
Ducted High ESP	–	BDDH-5.6(18)SAK	–	BDDH-7.1(24)SAK
Ducted Low ESP	–	BDDL-5.6(18)SAK	BDDL-6.3(22)SAK	BDDL-7.1(24)SAK
Wall Mounted	–	B-HW-5.6(18)-A3AK	–	B-HW-7.1(24)-A3AK
Floor Ceiling	–	BDFC-5.0(18)-AK	–	BDFC-7.1(24)-AK
4-Way Cassette	BD4W-4.5(15)SAK	BD4W-5.6(18)SAK	BD4W-6.3(21)SAK	BD4W-7.1(24)SAK
Compact 4-Way Cassette	BD4W-4.5(15)SBV	BD4W-5.0(17)SBV	–	–
2-Way Cassette	BD2W-4.5(15)SAK	BD2W-5.0(18)SAK	–	BD2W-7.1(24)SAK
Console	–	BDCO-5.0(18)-AK	–	–

V5 Indoor Units

V5 Indoor Units - 7K to 96K BTU (continued)

Capacity Range (Approximately Btuh)	27,000	30,000	34,000	36,000
Ducted High ESP	–	BDDH-9.0(30)SAK	–	BDDH-11.2(36)SAK
Ducted Low ESP	BDDL-8.0(27)SAK	BDDL-9.0(30)SAK	BDDL-10.0(34)SAK	BDDL-11.2(38)SAK
Wall Mounted	–	–	–	–
Floor Ceiling	–	BDFC-9.0(30)-AK	–	BDFC-11.2(36)-AK
4-Way Cassette	–	BD4W-9.0(30)SAK	–	BD4W-11.2(36)SAK

Capacity Range (Approximately Btuh)	42,000	48,000	54,000	72,000	96,000
Ducted High ESP	BDDH-12.5(42)SAK	BDDH-14.0(48)SAK	BDDH-16.0(54)SAK	–	–
Ducted Low ESP	BDDL-12.5(42)SAK	BDDL-14.0(48)SAK	–	–	–
Large Ducted	–	–	–	BDDH-22.4(72)-AK	BDDH-28.0(96)-AK
Floor Ceiling	BDFC-12.5(42)-AK	BDFC-14.0(48)-AK	–	–	–
4-Way Cassette	BD4W-12.5(42)SAK	BD4W-14.0(48)SAK	–	–	–

V5 Indoor Units

V5 Indoor Unit Nomenclature

B - DL 4.5(15) S A K

Installation Type
B = Indoor Unit (IDU)

Power
D = DC Inverter
- [dash] = PSC Motor

Equipment Type
DL = Ducted Low ESP
DH = Ducted High ESP
4W = 4-Way Standard Cassette
4WC = 4-Way Compact Cassette
2W = 2-Way Cassette
CO = Console
HW = High Wall
FC = Floor or Ceiling
FA = Fresh Air Processor

Voltage
A = 1Ph-120V-60Hz
K = 1Ph-208/230V-60Hz

Version
A = Design Series
B = Super High ESP (DH only)

Condensate Pump
S = Included Condensate Pump
- [dash] = No Pump

Cooling Capacity

2.2(07) = 2.2kW(7,500 Btu/h)	9.0(30) = 9kW(30,000 Btu/h)
2.8(09) = 2.8kW(9,000 Btu/h)	11.2(36) = 11.2kW(36,000 Btu/h)
3.6(12) = 3.6kW(12,000 Btu/h)	12.5(42) = 12.5kW(42,000 Btu/h)
4.1(14) = 4.1kW(14,000 Btu/h)	14.0(48) = 14kW(48,000 Btu/h)
4.4(15) = 4.4kW(15,000 Btu/h)	15.8(54) = 15.8kW(54,000 Btu/h)
5.6(18) = 5.6kW(18,000 Btu/h)	22(72) = 22kW(72,000 Btu/h)
6.3(22) = 6.3kW(22,000 Btu/h)	28(96) = 28kW(96,000 Btu/h)
7.1(24) = 7.1kW(24,000 Btu/h)	



Ducted High ESP



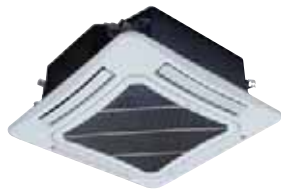
Ducted Low ESP



2-Way Cassette



4-Way Compact Cassette



4-Way Cassette



Fresh Air Processor



Console



High Wall



Floor Ceiling